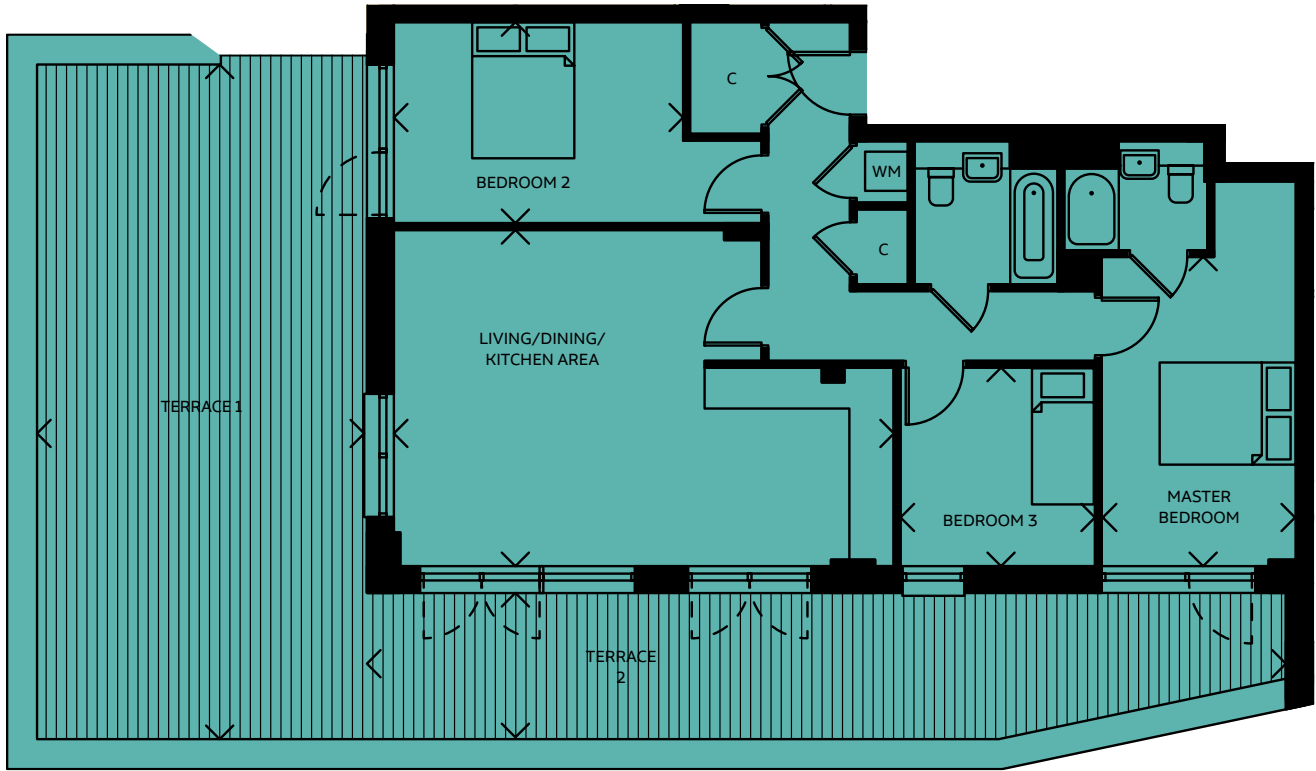


POP type 14

three bedroom penthouse

no. 284



Living/Dining/Kitchen Area

7.33m x 4.93m 24'1" x 16'2"

Master Bedroom

4.54m x 2.85m 14'11" x 9'4"

Bedroom 2

4.25m x 2.95m 13'11" x 9'8"

Bedroom 3

2.91m x 2.85m 9'7" x 9'4"

TOTAL AREA

93.4 SQ M **1005.4 SQ FT**

Terrace 1

9.91m x 4.84m 32'6" x 15'11"

Terrace 2

13.50m x 2.14m 44'4" x 7'0"

FIFTH FLOOR

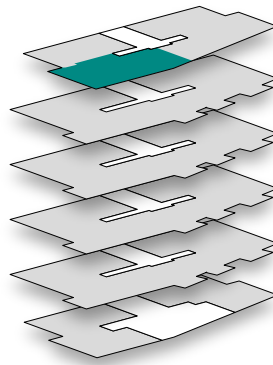
FOURTH FLOOR

THIRD FLOOR

SECOND FLOOR

FIRST FLOOR

GROUND FLOOR



WM = Washing Machine

C = Cloakroom

All room sizes are approximate showing maximum dimensions from wall to wall. They are to finished measurements and are not intended for carpet sizes or items of furniture. Waltham Forest Council operates a policy of continuous product development and all room layouts may be subject to minor modifications. Kitchen and bathroom layouts shown are indicative only. Please ask your Sales Consultant for detailed information regarding specific properties.