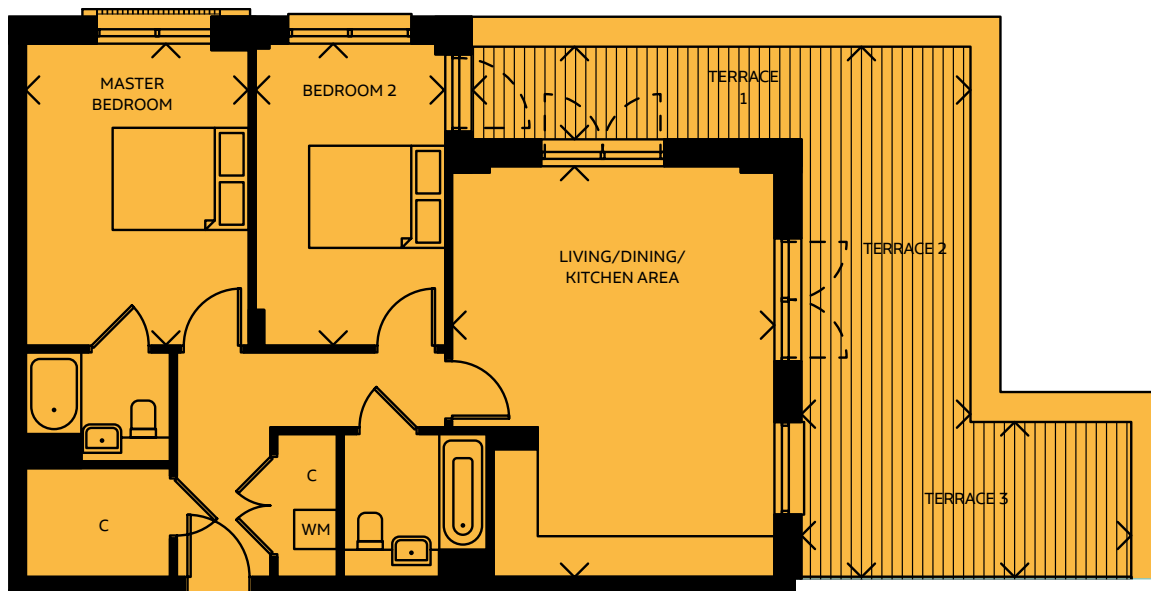


POP type 11

two bedroom penthouse

no. 282



Living/Dining/Kitchen Area

6.03m x 4.73m 19'9" x 15'6"

Master Bedroom

4.43m x 3.27m 14'6" x 10'9"

Bedroom 2

4.43m x 2.78m 14'6" x 9'1"

TOTAL AREA

77.2 SQ M **830.9 SQ FT**

Terrace 1

7.32m x 1.36m 24'0" x 4'5"

Terrace 2

7.78m x 2.48m 25'6" x 8'2"

Terrace 3

4.84m x 2.27m 15'11" x 7'5"

FIFTH FLOOR

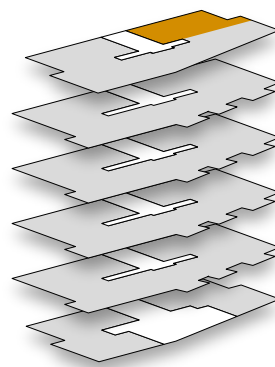
FOURTH FLOOR

THIRD FLOOR

SECOND FLOOR

FIRST FLOOR

GROUND FLOOR



WM = Washing Machine

C = Cloakroom

All room sizes are approximate showing maximum dimensions from wall to wall. They are to finished measurements and are not intended for carpet sizes or items of furniture. Waltham Forest Council operates a policy of continuous product development and all room layouts may be subject to minor modifications. Kitchen and bathroom layouts shown are indicative only. Please ask your Sales Consultant for detailed information regarding specific properties.