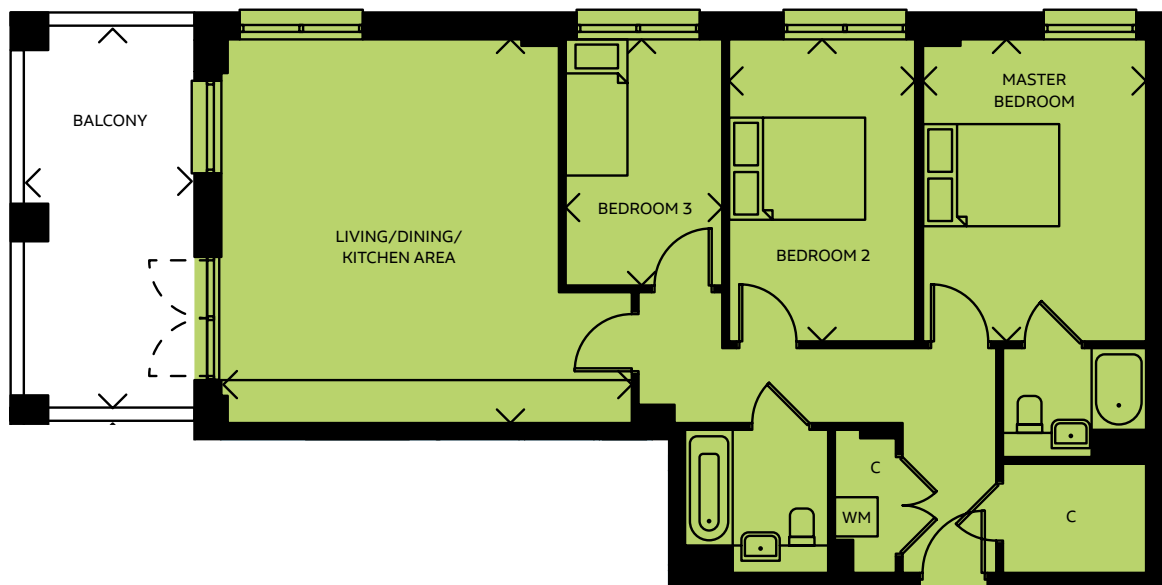


POP type 8

three bedroom apartment

no. 281



Living/Dining/Kitchen Area

6.00m x 5.63m 19'8" x 18'6"

Master Bedroom

4.43m x 3.27m 14'6" x 10'9"

Bedroom 2

4.43m x 2.75m 14'6" x 9'0"

Bedroom 3

3.61m x 2.30m 11'10" x 7'7"

TOTAL AREA

91.2 SQ M **981.7 SQ FT**

Balcony

2.50m x 5.60m 8'2" x 18'4"

FIFTH FLOOR

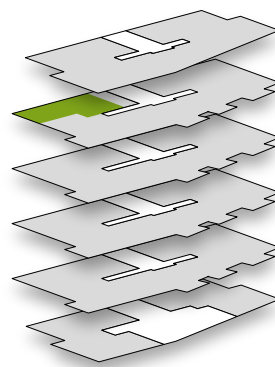
FOURTH FLOOR

THIRD FLOOR

SECOND FLOOR

FIRST FLOOR

GROUND FLOOR



WM = Washing Machine

C = Cloakroom

All room sizes are approximate showing maximum dimensions from wall to wall. They are to finished measurements and are not intended for carpet sizes or items of furniture. Waltham Forest Council operates a policy of continuous product development and all room layouts may be subject to minor modifications. Kitchen and bathroom layouts shown are indicative only. Please ask your Sales Consultant for detailed information regarding specific properties.