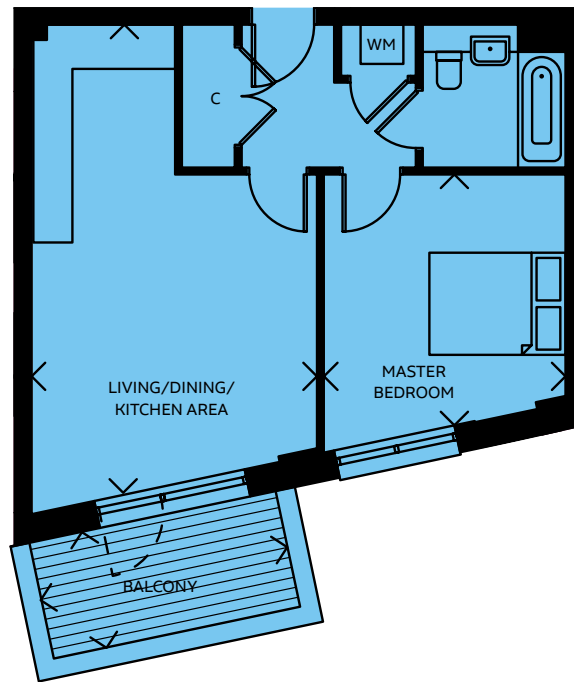


POP type 2

one bedroom apartment

no. 256



Living/Dining/Kitchen Area

6.90m x 4.19m 22'8" x 13'9"

Master Bedroom

3.70m x 3.55m 12'2" x 11'8"

TOTAL AREA

50.0 SQ M 538.2 SQ FT

Balcony

3.45m x 1.62m 11'4" x 5'4"

FIFTH FLOOR

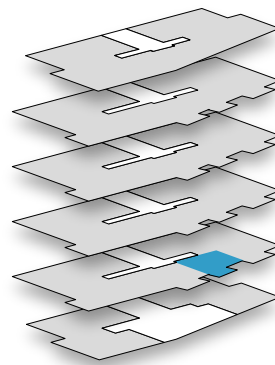
FOURTH FLOOR

THIRD FLOOR

SECOND FLOOR

FIRST FLOOR

GROUND FLOOR



WM = Washing Machine

C = Cloakroom

All room sizes are approximate showing maximum dimensions from wall to wall. They are to finished measurements and are not intended for carpet sizes or items of furniture. Waltham Forest Council operates a policy of continuous product development and all room layouts may be subject to minor modifications. Kitchen and bathroom layouts shown are indicative only. Please ask your Sales Consultant for detailed information regarding specific properties.