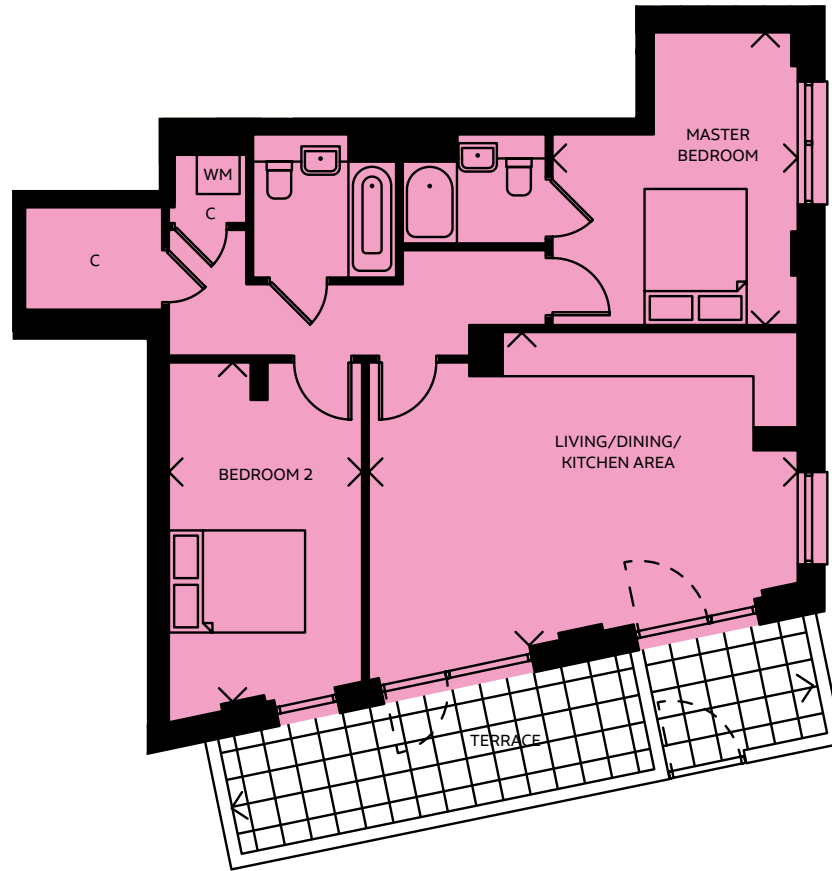


POP type 4

two bedroom apartment

no. 250



Living/Dining/Kitchen Area

6.30m x 4.60m 20'8" x 15'1"

Master Bedroom

4.30m x 3.60m 14'1" x 11'10"

Bedroom 2

5.00m x 2.83m 16'5" x 9'3"

TOTAL AREA

76.5 SQ M 823.4 SQ FT

Terrace

1.70m x 8.50m 5'7" x 27'11"

FIFTH FLOOR

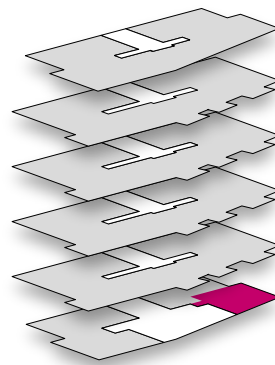
FOURTH FLOOR

THIRD FLOOR

SECOND FLOOR

FIRST FLOOR

GROUND FLOOR



WM = Washing Machine

C = Cloakroom

All room sizes are approximate showing maximum dimensions from wall to wall. They are to finished measurements and are not intended for carpet sizes or items of furniture. Waltham Forest Council operates a policy of continuous product development and all room layouts may be subject to minor modifications. Kitchen and bathroom layouts shown are indicative only. Please ask your Sales Consultant for detailed information regarding specific properties.