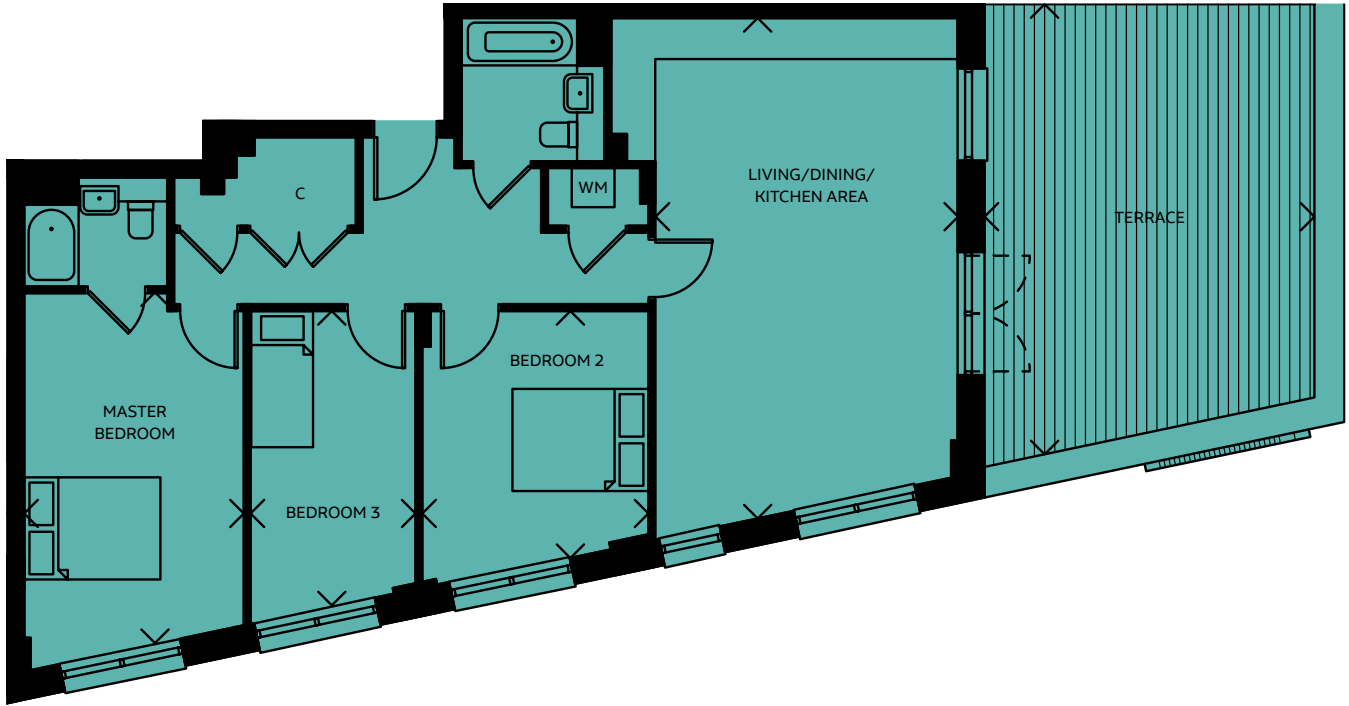


# POP type 13

## three bedroom penthouse

### no. 283



#### Living/Dining/Kitchen Area

7.30m x 4.44m 23'11" x 14'7"

#### Master Bedroom

5.09m x 3.22m 16'8" x 10'7"

#### Bedroom 2

3.62m x 3.32m 11'11" x 10'11"

#### Bedroom 3

4.35m x 2.42m 14'3" x 7'11"

#### TOTAL AREA

**98.5 SQ M 1060.2 SQ FT**

#### Terrace

6.60m x 4.84m 21'8" x 15'11"

#### FIFTH FLOOR

FOURTH FLOOR

THIRD FLOOR

SECOND FLOOR

FIRST FLOOR

GROUND FLOOR



WM = Washing Machine

C = Cloakroom

All room sizes are approximate showing maximum dimensions from wall to wall. They are to finished measurements and are not intended for carpet sizes or items of furniture. Waltham Forest Council operates a policy of continuous product development and all room layouts may be subject to minor modifications. Kitchen and bathroom layouts shown are indicative only. Please ask your Sales Consultant for detailed information regarding specific properties.