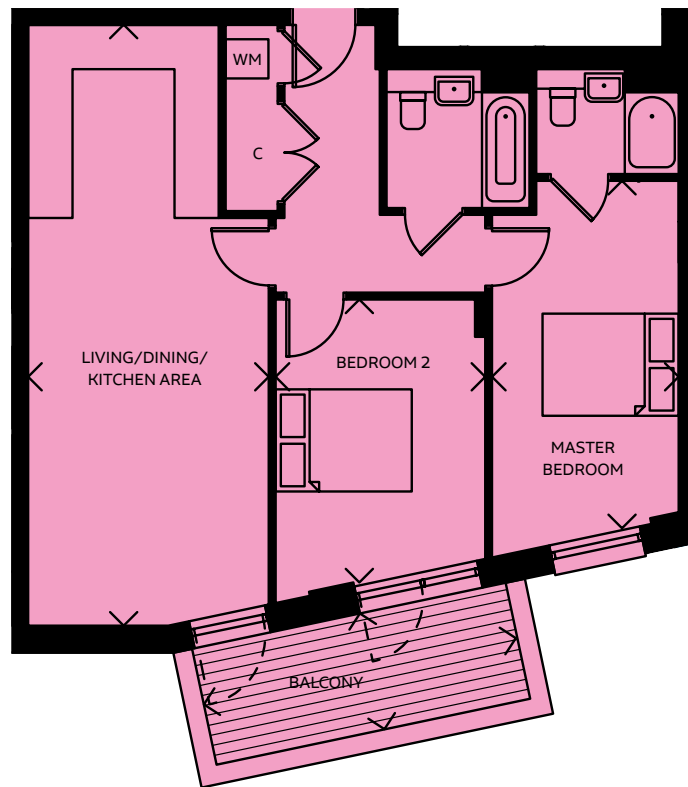


POP type 6

two bedroom apartment

no. 264



Living/Dining/Kitchen Area

8.82m x 3.53m 28'11" x 11'7"

Master Bedroom

5.09m x 2.75m 16'8" x 9'0"

Bedroom 2

4.23m x 3.08m 13'11" x 10'1"

TOTAL AREA

75.8 SQ M 815.9 SQ FT

Balcony

4.46m x 1.62m 14'8" x 5'4"

FIFTH FLOOR

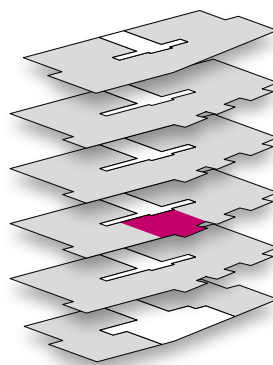
FOURTH FLOOR

THIRD FLOOR

SECOND FLOOR

FIRST FLOOR

GROUND FLOOR



WM = Washing Machine

C = Cloakroom

All room sizes are approximate showing maximum dimensions from wall to wall. They are to finished measurements and are not intended for carpet sizes or items of furniture. Waltham Forest Council operates a policy of continuous product development and all room layouts may be subject to minor modifications. Kitchen and bathroom layouts shown are indicative only. Please ask your Sales Consultant for detailed information regarding specific properties.