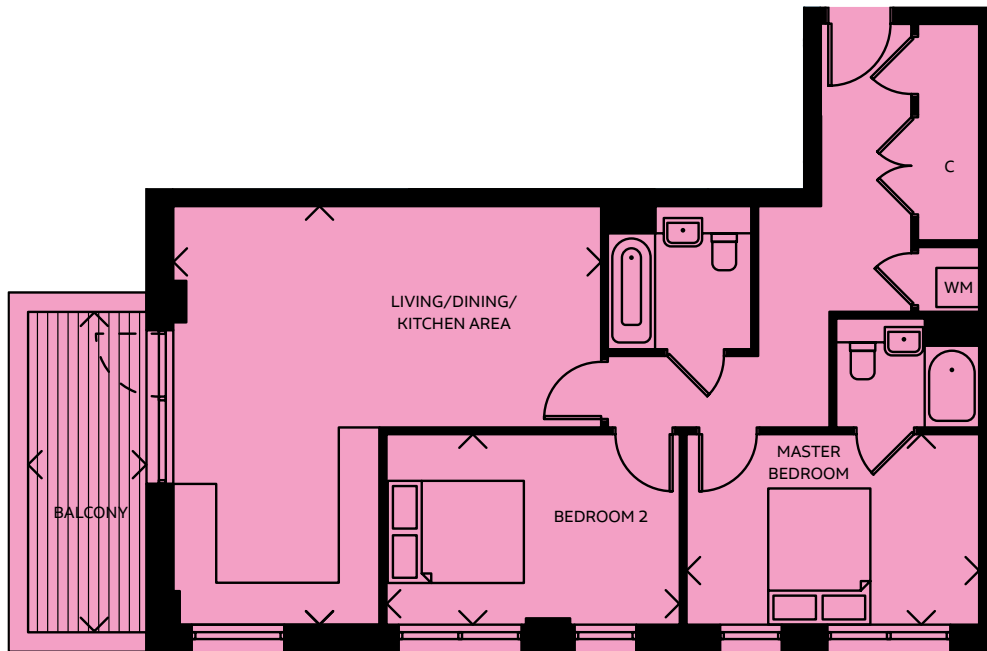


# POP type 5

## two bedroom apartment

### no. 258



#### Living/Dining/Kitchen Area

6.28m x 6.15m    20'7" x 20'2"

#### Master Bedroom

4.30m x 2.80m    14'1" x 9'2"

#### Bedroom 2

4.30m x 2.80m    14'1" x 9'2"

#### TOTAL AREA

**78.8 SQ M                      848.2 SQ FT**

#### Balcony

4.46m x 1.62m    14'8" x 5'4"

FIFTH FLOOR

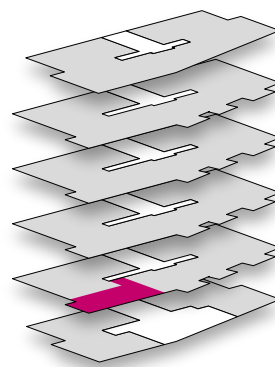
FOURTH FLOOR

THIRD FLOOR

SECOND FLOOR

**FIRST FLOOR**

GROUND FLOOR



WM = Washing Machine

C = Cloakroom

All room sizes are approximate showing maximum dimensions from wall to wall. They are to finished measurements and are not intended for carpet sizes or items of furniture. Waltham Forest Council operates a policy of continuous product development and all room layouts may be subject to minor modifications. Kitchen and bathroom layouts shown are indicative only. Please ask your Sales Consultant for detailed information regarding specific properties.