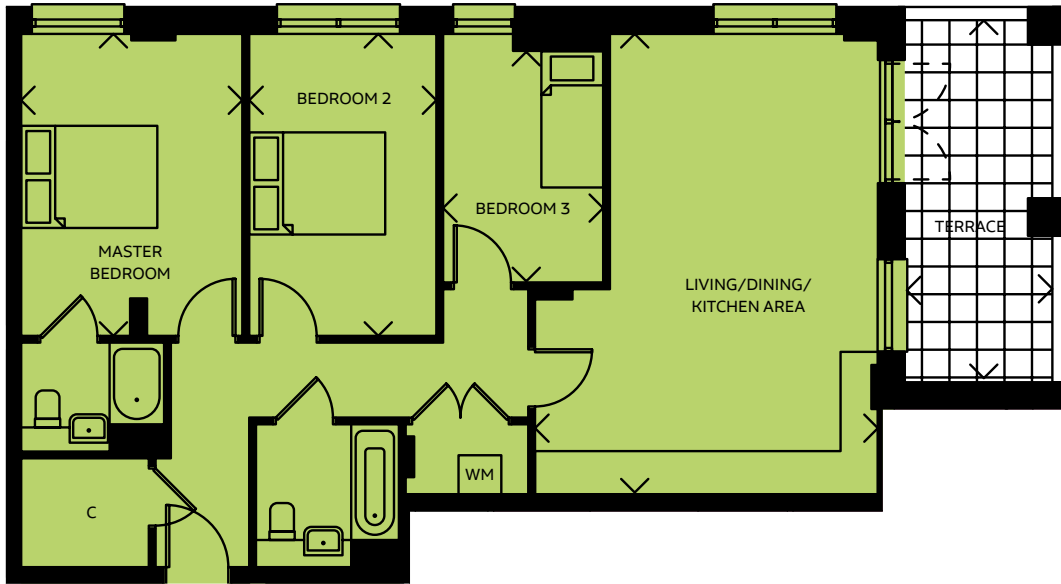


POP type 9

three bedroom apartment

no. 249



Living/Dining/Kitchen Area

6.76m x 5.03m 22'2" x 16'6"

Master Bedroom

4.43m x 3.25m 14'6" x 10'8"

Bedroom 2

4.43m x 2.75m 14'6" x 9'0"

Bedroom 3

3.40m x 2.35m 11'2" x 7'9"

TOTAL AREA

90.6 SQ M **975.2 SQ FT**

Terrace

2.10m x 5.20m 6'11" x 17'1"

FIFTH FLOOR

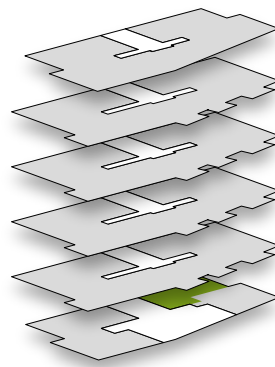
FOURTH FLOOR

THIRD FLOOR

SECOND FLOOR

FIRST FLOOR

GROUND FLOOR



WM = Washing Machine

C = Cloakroom

All room sizes are approximate showing maximum dimensions from wall to wall. They are to finished measurements and are not intended for carpet sizes or items of furniture. Waltham Forest Council operates a policy of continuous product development and all room layouts may be subject to minor modifications. Kitchen and bathroom layouts shown are indicative only. Please ask your Sales Consultant for detailed information regarding specific properties.